

SF700

SPI NOR / SPI NAND

Engineering IC Programmer

SF700 is a all-new designed SPI Flash engineering programmer, which supports all SPI NOR Flash and SPI NAND Flash in the market. SF700 continues to provide strong engineering mode and command line as SF600, DediProg's another programmer, to satisfy the demand for R&D. Apart from the engineering application, SF700 also supports project file for small volume production demand. SF700 can do programming in parallel with multiple programmers or standalone mode.



Features

◆ High speed programming

- Built in high speed processor to achieve high programming speed.

IC Type	IC P/N	Data Size	P+V Time (sec)	
			Engineering mode	Production mode
SPI Octal NOR	MT35XU01GBBA1	128MB	141	138
	MX66UM1G45G	128MB	148	146
SPI NAND	GD5F1GQ4UC	64KB	61	62

SPI CLK setting: 25MHz.

IO Mode: SPI Octal NOR in octal mode and SPI NAND in quad mode.

◆ Support IC types

- SPI Octal NOR Flash, SPI NOR Flash, and SPI NAND Flash.

◆ Support a variety of file formats

- Binary, Intel Hex, Motorola S19, and ROM, etc.

◆ Support Command Line

- Provide Command line for software redevelopment.

◆ Support Stand-alone mode

- IC programming without PC.

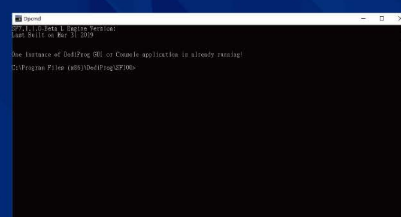
◆ ATE Port

- With ISP adaptor, provide Busy/Pass/Error and Start pins for remote control.

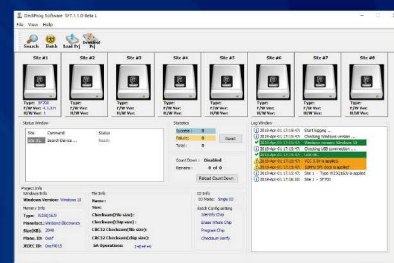
◆ Support 1.2V low voltage IC.

◆ Multiple programmers support to program IC in parallel.

Command Line



Graphical User Interface



Hardware

Architecture
Programming Adaptor

ARM and FPGA architecture
ISP adaptor or socket adaptor

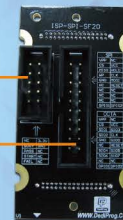
Communication Interface
Built-in Buffer
Operation Interface
Hardware Protection
Vcc
Current Limitation on Vcc

USB 2.0 in the programmer and ATE port on ISP adaptor.
256MB
Busy/Pass/Error LED indicators and Start Button.
Overcurrent and ESD protection
1.2~3.6V
200mA

Supported IC Type

SPI Octal NOR Flash,
SPI NOR Flash, and
SPI NAND Flash

ATE Port
ISP



Socket
Adaptor

Software

Supported OS
Supported File Type
Programming Functions
Extra Functions

Windows XP/Vista/7/8/8.1/10
Binary, Intel Hex, Motorola S19, ROM.
Blank Check, Erase, Program, Verify, and Batch mode.
a. Batch mode configuration
b. Programming area configuration
c. Engineering mode tool
d. Status Register configuration
e. Automatically unprotected option
f. VCC/CLK/IO mode configuration

Power

USB 5V or DC 5V

Dimension

108mm*67mm*20mm

Weight

70g

Standard Accessories

1. SF700 IC Programmer *1
2. USB Cable *1
3. AC 100~240V to DC 5V/1A Power Adaptor *1
4. ISP-SPI-SF20 ISP Adaptor with ISP cable*1
5. ISP-SPI-SF14 ISP Adaptor with ISP cable*1
6. ISP split cable for SPI Octal NOR Flash*1
7. CD-ROM (Include software and user manual)*1

Taiwan Headquarter TEL : + 886 - 2 - 2790 - 7932 FAX : + 886 - 2 - 2790 - 7916
4F,No.7,Lane 143, Xinming Rd., Neihu District, Taipei, Taiwan, R.O.C 114

China Office TEL : +86 - 21 - 5160 - 0157
Room 518, Building 66, Lane1333, Xinlong Road, Vanke Hongqiao CBD.Min Hang District, Shanghai, P.R.C. 201101

U.S. Office TEL: + 1 - 909 - 274 - 8860
209 E Baseline RD, Suite E208 #8, Tempe, AZ, 85283, USA