

# Acute®

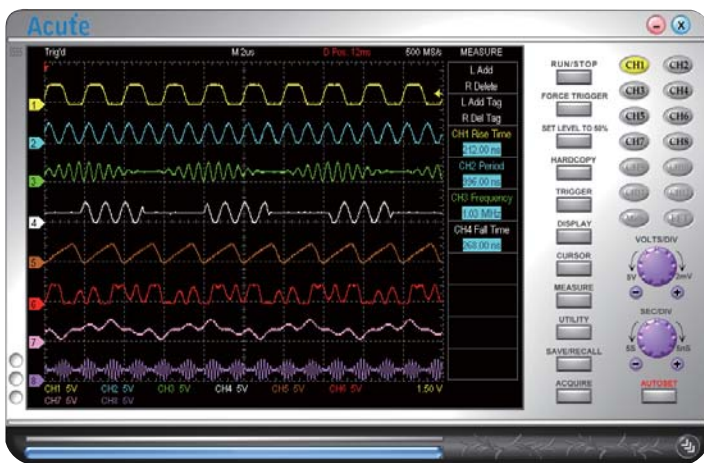
## TravelScope DSO

- PC-based, USB2.0 interface / powered
- 2 channels (stackable to 12 channels)
- 1 GS/s sampling, 200 MHz bandwidth
- Export data to WORD, EXCEL, TEXT, HTML, MATLAB etc.
- Trigger Group I : Edge, External, Width, Video / TV
- Trigger Group II : A-B, Delay, Pattern, Runt, Setup / Hold, State, Timeout, Transition, Window,...
- Bus Trigger / Decode : CAN, I<sup>2</sup>C, UART, ...
- Embedded 2-channel FG
- Data Logger (HD storage)
- Input Sensitivity : 2 mV/div



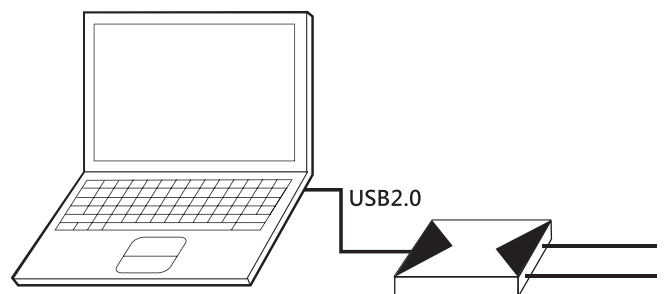
Model	Record Length	Resolution	Trigger
TS2202E	10 KS/ch	8 bits	Group I
TS2212E	128 MS/ch	8 bits	Group I
TS2212A	128 MS/ch	8 bits	Group I, II, Bus
TS2212H	128 MS/ch	16 bits	Group I, II, Bus

### Software Window



### System Requirements

- USB 2.0 port
- XP, Vista, Win 7, Win 8 (32 / 64 bits)



# Acute®

PC-based T&M Instruments

AcuteTechnology Inc.

Tel: 886-2-2999-3275 Fax: 886-2-2999-3276 E-mail: service@acute.com.tw <http://www.acute.com.tw>



## TravelScope series

Acquisition	
Mode	Sample, Average, Envelope, Peak detect, High resolution
Sampling	<ul style="list-style-type: none"> <li>• <b>TS2202E/TS2212E/TS2212A:</b> 8 bits : 1 GS/s @ 1 Ch; 500 MS/s @ 2 Ch</li> <li>• <b>TS2212H:</b> 8 bits : 1 GS/s @ 1 Ch; 500 MS/s @ 2 Ch 12 bits : 500 MS/s @ 1 Ch; 250 MS/s @ 2 Ch 14/15 bits : 100 MS/s @ 2 Ch 16 bits : 100 MS/s @ 1 Ch</li> </ul>
Record length	<ul style="list-style-type: none"> <li>• <b>TS2202E:</b> 8 bits : 10KS/ch</li> <li>• <b>TS2212E/TS2212A:</b> 8 bits : 128MS/ch @1 Ch; 64MS/ch @2 Ch</li> <li>• <b>TS2212H:</b> 8 bits : 128MS/ch @1 Ch; 64MS/ch @2 Ch 12/14/15/16 bits : 32MS/ch</li> </ul>

Input	
Input channels	2 (Ch1, Ch2)
Input coupling	AC/DC
Input impedance	1 MΩ    18 pF
Overvoltage protection	± 100 V (DC+AC peak)
Ch-Ch crosstalk	≥ 100 : 1
Ch-Ch skew	100 ps between two channels with the same scale & coupling settings

Vertical	
Bandwidth	200 MHz @ 1-channel; 100 MHz @ 2-channels
Rise Time	1.75 ns @ 200 MHz; 3.5 ns @ 100 MHz
Resolution	8 bits (TS2202E/TS2212E/TS2212A) 12, 14, 15,16 bits (TS2212H)
Input Sensitivity	2 mV/div to 10 V/div (Full Scale: ±4 div/screen, ±1 div beyond screen)
Position range	±4 divisions
Offset range	±150 V @ 2, 5, 10 V/div; ±1.5 V @ 0.2, 0.5, 1 V/div; ±1.5 V @ 2, 5, 10, 20, 50, 100 mV/div
DC accuracy	±3% of full-scale
Bandwidth limit	20 MHz, 100 MHz or Full

Horizontal	
Time scale	2 ns/div to 10 s/div (10 div/screen)
Time resolution	40 ps
Time accuracy	±10 ppm
Delay range	Pre-trigger: 0 to 100% of 1 screen; Post-trigger up to 50 sec.

## Function Generator

Output channels	2 (Gen.1, Gen.2)
Output impedance	600 Ω
Frequency	DC to 1 MHz
Amplitude	0 V to 2.5 V (to 1 MΩ load) ±50mV Fixed at 0 V @ Dual channel mode
Offset	-1.25 V to 1.25 V @ Single channel mode (Gen 2 only)
FG mode	Sine, Square, Pulse, Triangle, Ramp(Sawtooth), DC
Modulation	AM, FM, PM, ASK, FSK, PSK
Others	Sweep, Burst

## Packing list

Item	Quantity
1. TravelScope device	1
2. Stack cable	1
3. USB 2.0 Cable	1
4. 250 MHz Probe & Accessories pack	2
5. Soft case	1
6. Installation CD	1

Trigger	
Trigger mode	Auto, Normal, Single, Untriggered-Roll (Max S/R up to 250KS/s, maximum speed is PC-dependent)
Source	Ch1, Ch2, Ext. (TTL only)
Coupling	DC, LF reject (50kHz), HF reject (50kHz), Noise reject
Trigger range	±4 div from window center
Vertical sensitivity	1 div or 5 mV @ <10 mV/div; 0.6 div @ ≥ 10 mV/div
Holdoff time	~60 ns to 10 sec.
Trigger type	Edge, Video/TV, Pulse Width
Basic trigger	Rising, Falling, Alternate, Either

### Trigger Group I

Edge	A-trigger
Width	Range from 1 ns to 50 sec @ 1-channel Range from 2 ns to 50 sec @ 2-channel
Video/TV	NTSC, PAL, SECAM, Field, Scan Line

### Trigger Group II (TS2212A / TS2212H Only)

B-Trigger	Event, Timing
Logic	State, Pattern (AND, OR, NAND, NOR)
Runt	Positive/Negative/Runt+Pulse Width Range from 8 ns to 50 sec
Timeout	Positive/Negative/Any Range from 8 ns to 50 sec

### Bus Trigger (TS2212A / TS2212H Only)

Serial Bus	CAN, I <sup>2</sup> C, UART...
------------	--------------------------------

### Bus Decode (TS2212A / TS2212H Only)

Serial Bus	CAN, I <sup>2</sup> C, UART...
------------	--------------------------------

### Measurement/Processing

Special Function	Autoset, Logger
Measurement	Frequency, Period, Max, Min, High, Low, Vpp, Amplitude, Vrms, Mid, +Duty, -Duty, +Width, -Width, Rise Delay, Fall Delay, +Overshoot, -Overshoot, Mean, Cycle Vrms, Cycle Mean, Phase
Cursor	Time difference, Voltage difference
Math	+, -, x, ÷, XY,  A , √A, Log(A), Ln(A), ∫Adt, e <sup>A</sup> Rectangular, Blackman, Hann, Hamming, Harris, Triangular, Cosine, Lanczos, Gaussian. (Vertical Scale: dBm RMS, dBV RMS, Linear RMS)
FFT	WORD, EXCEL, CSV, TEXT, HTML, MATLAB, Clipboard, Hardcopy, Preview

### I/O port

Trig-In	TTL 3.3 V level (Rising/Falling)
Trigger pulse approval	> 8 ns
Trig-Out	TTL 3.3 V

## Stack

Max. channels expand	12 ch (6x TravelScopes, 1 Master & 5 Slaves)
Trigger source	Only available for Master-scope
Skew between devices	Skew between Master & Slave ±1ns @ 1-channel Skew between Master & Slave ±2ns @ 2-channel

