

LP-456

Universal Gang 4 Programmer

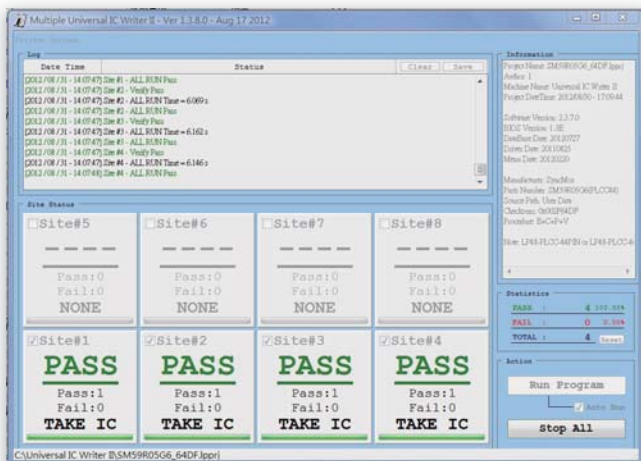
Universal Pin-driver of high performance



LP-456 is ultra-speedy universal 4x48 pin-drive concurrent production programmer. You can just use the general type adapters on the market for efficient multiprogramming solution.

Features

- ◎ Four independent universal programming pin-driver in one unit.
- ◎ Provides with DUT 75MHz bandwidth and $< \pm 2.5\text{ns}$ signal skew. In addition to the high processing speed, you can verify whether the devices working frequency meet their specifications.
- ◎ Provides Hands-free Operation. The asynchronous and concurrent operation allows a chip to begin programming immediately upon insertion of chip. The operator just take off the finished device and inserts a new device.
- ◎ Provides mass-production-oriented software. There is used a Project file to control LP-456 to minimize the operator error. Moreover, it provides programming history and yield statistic for needs of production managements.
- ◎ Provides insertion test and contact check before programming.
- ◎ General type adapter can be used on LP-456, save money and convenience.



Specifications

Power Signal	Logic Signal Level	1.5V~6.0V,10mV
	IOL & IOH Current	10mA
	Logic Signal Frequency	75MHz (3-5V)
		60MHz (2.5V)
		45MHz (1.8V)
		25MHz (1.5V)
	Signal Skew	$< \pm 2.5\text{ns}$ (3-5V)
	Clock	0Hz~75MHz
	VDD & VIO Level	1.5V~6.5V,10mV
	IDD & IIO Current	400mA
VPP & VHH Level	1.5V~15.5V,20mV	
IPP& IHH Current	150mA	
PIN DRIVERS	48 Pin Universal Pin-Driver x4	
DUT SORCKET	DIP-48 ZIF(Zero Insertion Force) x 4	
Dimension	372mm(L) \times 205mm(W) \times 45mm(H)	
Weight	2.1kg	
Supported Devices	NOR FLASH, SPI EPROM, EEPROM, MPU, MCU, CPLD, NV-RAM...etc.	
Supported File Format	Binary/Machine Code, Intel HEX, TEK HEX Motorola HEX	

PC System Requirements

OS	Windows 7 / Vista / XP (32bits & 64bits)
Processor	Pentium 4 Above
Memory	2 GB RAM Above
Hard Disk	500MB Above
	Buffer 1GB Above
Communication	USB 2.0 HIGH SPEED

Standard Accessories

Main unit	1
USB Cable	1
CD (included driver & user's manual)	1
DC 5V/6A 30Wpower adapter	1

Optional Accessories

PLCC, JLCC, SDIP, SOP, VSOP, SSOP, TSOP, TSSOP, QFP, PQFP, TQFP, VQFP, BGA, uBGA, SON, WSON, QFN(MLF)..... adapters

