

# SU-320

## Stand-alone Universal & Gang Programmer

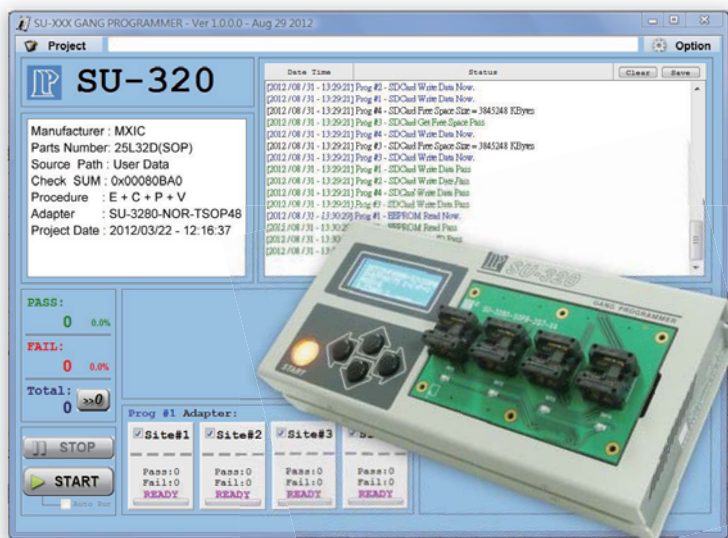
### High-Expansion Flexibility



SU-320 is high speed programming for design engineering and small production. It supports PC-based and Stand-alone programming mode which through LCD and keypad download the file to the inside 3.2GB memory. Moreover, SU-320 adopts modular design. If with the universal DIP module, you can just use general type adapter on the market for different package. Or you can select gang module for 2-4 site programming.

### Features

- ◎ Provides with DUT 75MHz bandwidth and  $< \pm 2.5\text{nS}$  signal skew.
- ◎ Provides the stand-alone mode operation. Just use 5 keys and 20x4 LCD, you can select a project and start to program.
- ◎ Portable and compact design allow you to use everywhere.
- ◎ Provides IC insertion test and contact check before programming. Under the AUTO mode, just insert the IC, SU-320 will start the processes automatically.
- ◎ Provides high-expansion flexibility modular design. It can use as single-side universal programmer or SPI gang programmer.
- ◎ Provides mass-production-oriented software. There is used a project file to control to minimize the operator error. Moreover, the log file help the production managements.



### Specifications

Power Signal	Logic Signal Level	1.5V~6.0V,10mV
	IOL,IOH Current	10mA
	Logic Signal Frequency	75MHz (3-5V)
		60MHz (2.5V)
		45MHz (1.8V)
		25MHz (1.5V)
	Signal Skew	$< \pm 2.5\text{nS}$ (3-5V)
	Clock	0Hz~75MHz
	VDD & VIO Level	1.5V~6.5V,10mV
	IDD & IIO Current	400mA
VPP & VHH Level	1.5V~15.5V,20mV	
IPP & IHH Current	150mA	
Display	20X4 Character LCD WORK & PASS LED	
Button	Direction key x 4. START key with light x 1	
Embedded Memory	3.2GBytes FLASH	
Module Dimension	120mm(L) × 75mm(W)	
SU-320 Dimension	240mm(L) × 115mm(W) × 60mm(H)	
Weight	1.1kg	
Support Device	NOR FLASH, SPI EPROM, EEPROM, MPU, MCU, CPLD, NV-RAM...	
Support File format	Binary/Machine Code, Intel HEX, TEK HEX, Motorola HEX	

### PC System Requirements

OS	Windows 7 / Vista / XP ( 32bits & 64bits )
Processor	Pentium 4 above
Memory	2 GB RAM above
Hard Disk	Main program 500MB above
	Buffer 2GB above
Communication	USB 2.0 High Speed

### Standard Accessories

Main Unit	1
USB Cable	1
CD ( Included Driver & User's Manual )	1
Power Adaptor DC 5V/2A 10W	1
SU-3280-DIP48, Universal DIP-48 module	1

### Optional Accessories

General Type Adapter: PLCC, JLC, SDIP, SOP, VSOP, SSOP, TSOP, TSSOP, QFP, PQFP, TQFP, VQFP, BGA, uBGA, SON, WSON, QFN(MLF)...

Gang Module Adapter: SOP8-150-X4, SOP8-207-X4, NOR-TSOP48-X4...